



# Launch Event



**Tuesday 24.11.2020**

**15H00 – 17H00 EAT**

**<https://esahub.rcmrd.org>**



Regional Resource Hub Host



With support of



Donors & Implementing partners







# Launch Event



## AGENDA

**TUESDAY 24.11.2020**



15:00 PM

Welcome  
The Biodiversity and Protected Areas Programme  
Opening remarks

15:30 PM

Voices from the region : Hub services and tools at multi-scales (regional, national and site level)

15:50 PM

The Regional Resource Hub : one stop shop to support decision making

16:40 PM

Knowledge product - State of Protected Areas and Conserved Areas in Eastern and Southern Africa

16:50 PM

What's in the pipeline?

16:55 PM

Closing remarks



Regional Resource Hub Host



With support of



Donors & Implementing partners







# LAUNCH OF THE REGIONAL RESOURCE HUB FOR EASTERN AND SOUTHERN AFRICA

TUESDAY 24.11.2020



## BIOPAMA

From Knowledge to Action for a Protected Planet

**Christine Mentzel**

BIOPAMA regional coordinator  
Senior Programme Officer at IUCN

Regional Resource Hub Host



With support of



Donors & Implementing partners



**"To contribute to improving the long-term conservation and sustainable use of biodiversity and natural resources in the Africa, Caribbean and Pacific Regions in protected areas and surrounding communities through better use and monitoring of information and capacity development on management and governance"**

**Initiative** of the Organisation of the African, Caribbean and Pacific (OACP) states

**Financed** by the European Union's 11th European Development Fund

**Implemented** jointly by

International Union for Conservation of Nature (IUCN)

Joint Research Centre (JRC) of the European Commission

**ESA Region**

Regional Centre for Mapping of Resources for Development (RCMRD)

Regional Resource Hub Host



With support of



Donors & Implementing partners

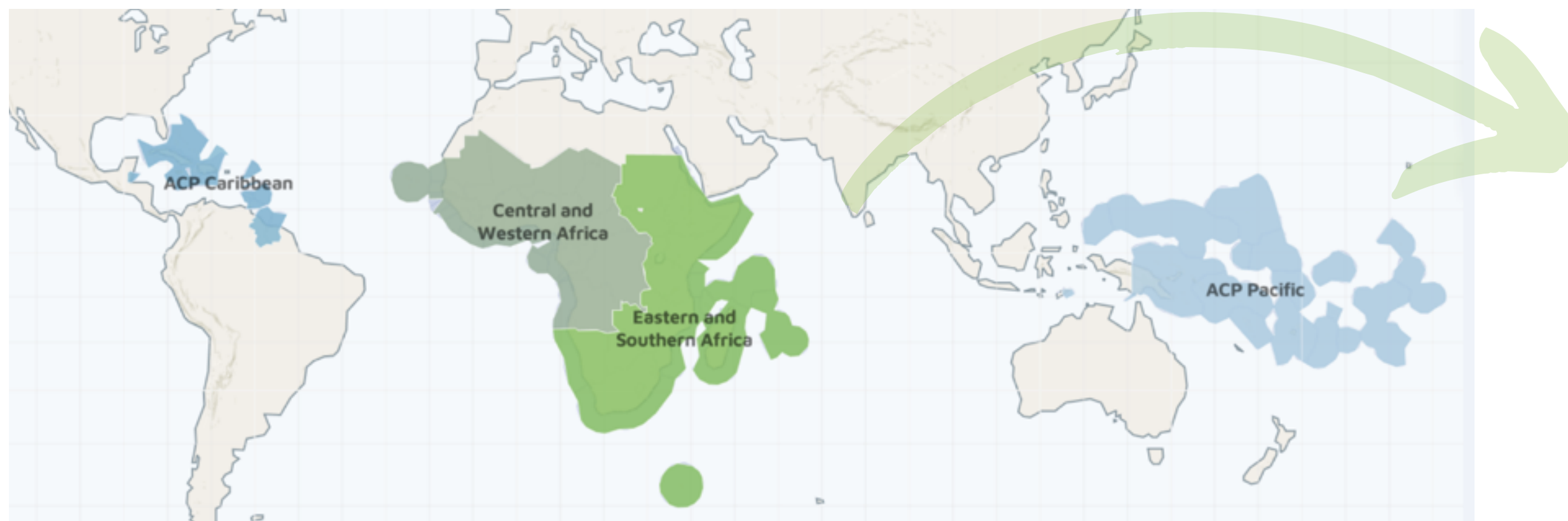






## Intervention Area

- **79 developing countries (including Least Developed and Small Island States)**
- **More than 1 billion people whose livelihoods depend on the natural resources**
- **More than half of the world's 35 biodiversity hotspots**
- **More than 9,000 protected areas, terrestrial and marine**



## 24 COUNTRIES







THE REGIONAL RESOURCE HUB



THE REGIONAL REFERENCE  
INFORMATION SYSTEM



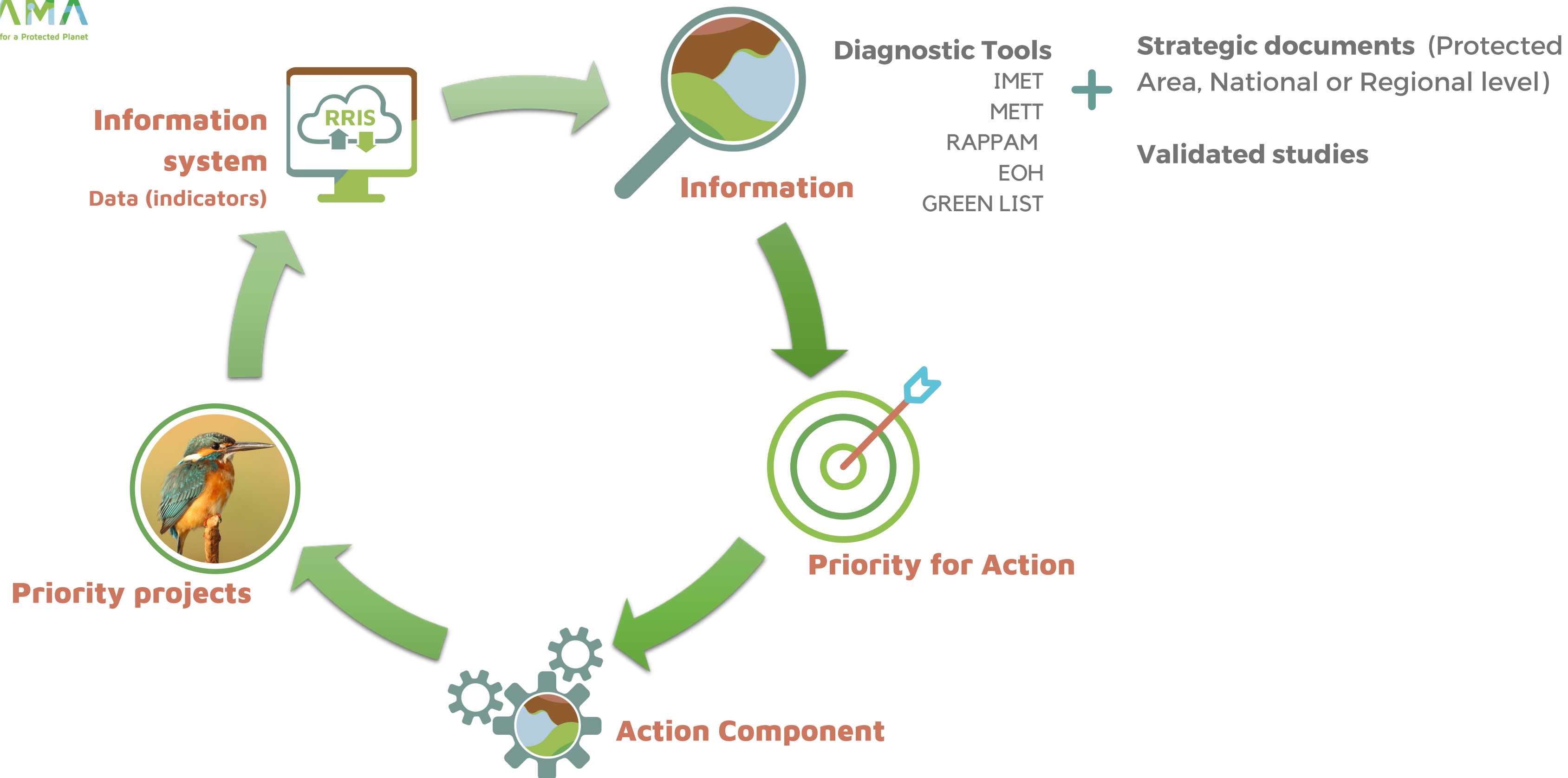
CAPACITY BUILDING



THE ACTION COMPONENT

BIOPAMA provides tailored support to protected area authorities in the ACP countries to address their priorities for improved management and governance of biodiversity and natural resources.









From Knowledge to Action for a Protected Planet

[www.biopama.org](http://www.biopama.org)



[www.biopama.org](http://www.biopama.org)

The Biodiversity and Protected Areas Management Programme (BIOPAMA) is an initiative of the ACP Group of States funded by the European Union's 11<sup>th</sup> European Development Fund.





# LAUNCH OF THE REGIONAL RESOURCE HUB FOR EASTERN AND SOUTHERN AFRICA

TUESDAY 24.11.2020

**Ngugi Kimani**  
RCMRD  
Host Institution

## EASTERN AND SOUTHERN AFRICA RESOURCE HUB

*Delivering information for better decisions*



**Regional Resource Hub Portal**

<https://esahub.rcmrd.org>

Regional Resource Hub Host



With support of



Donors & Implementing partners

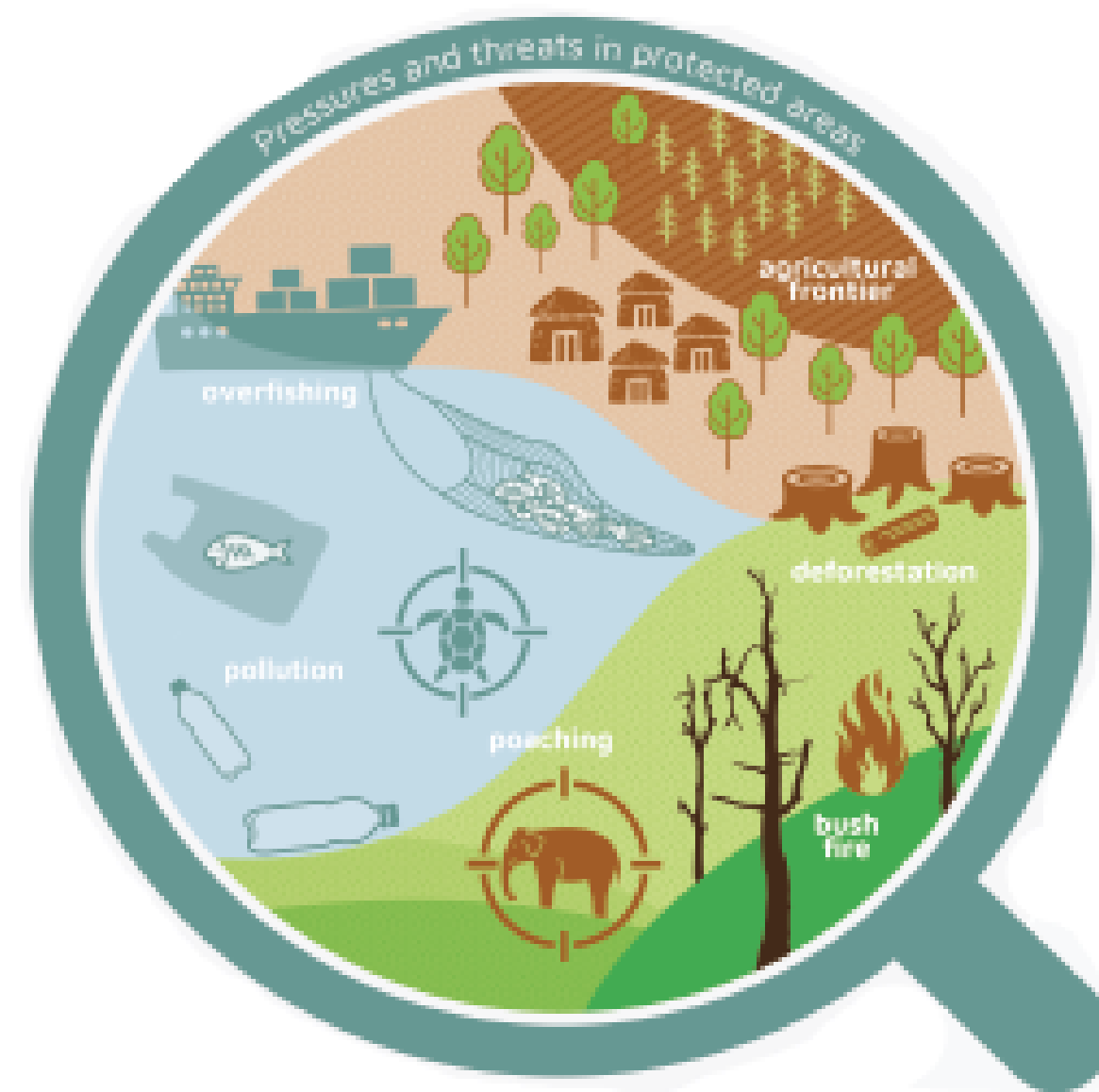




# What is the Regional Resource Hub ?

The Regional Resource Hub (RRH) is a knowledge hub for the Eastern and Southern Africa region that supports better decision making for fair and effective management and governance of protected and conserved areas.

The Hub compiles and analyzes relevant data and provides information to support field interventions, policy dialogue and decision-making processes at local, national and regional levels.



## Regional Resource Hub Host



## With support of



## Donors & Implementing partners







# Intervention Area



Eastern and Southern Africa

Countries Coverage : 24

Regional Resource Hub Host



With support of



Donors & Implementing partners





# Key Actors

The Regional Resource Hub is hosted and technically coordinated by the Regional Centre for Mapping of Resources for Development (RCMRD).



**Regional Centre for Mapping of Resources for Development**



The Regional Economic Communities- East African Community (EAC), Southern African Development Community (SADC), Indian Ocean Commission (IOC) and Intergovernmental Authority on Development (IGAD) play an important role in the definition of regional priorities and needs.



**Regional Resource Hub Host**



**Regional Centre for Mapping of Resources for Development**

**With support of**



**Donors & Implementing partners**







# Beneficiaries

The direct beneficiaries of the Regional Resource Hub are the protected area actors at the regional, national and local levels, whose efforts will continue to be supported by the provision of tools, services, capacity development and the possibility to finance actions at the site level.

- Ministries of Environment and National agencies leading on biodiversity conservation
- Protected Area agencies
- Regional organizations
- Local communities living in and around protected areas
- Civil society



## Regional Resource Hub Host



## With support of

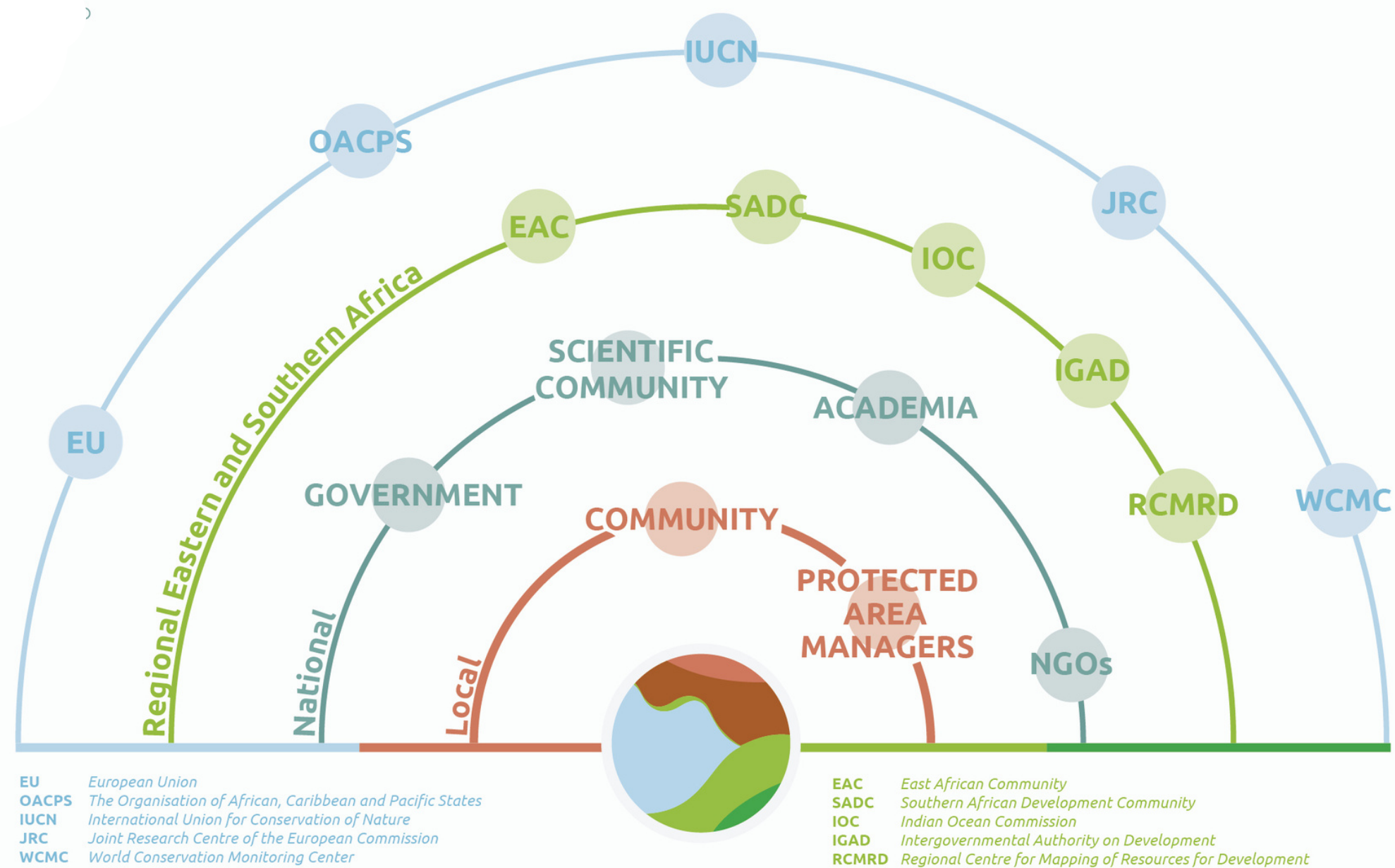


## Donors & Implementing partners





# Stakeholders



## Regional Resource Hub Host



## With support of



## Donors & Implementing partners

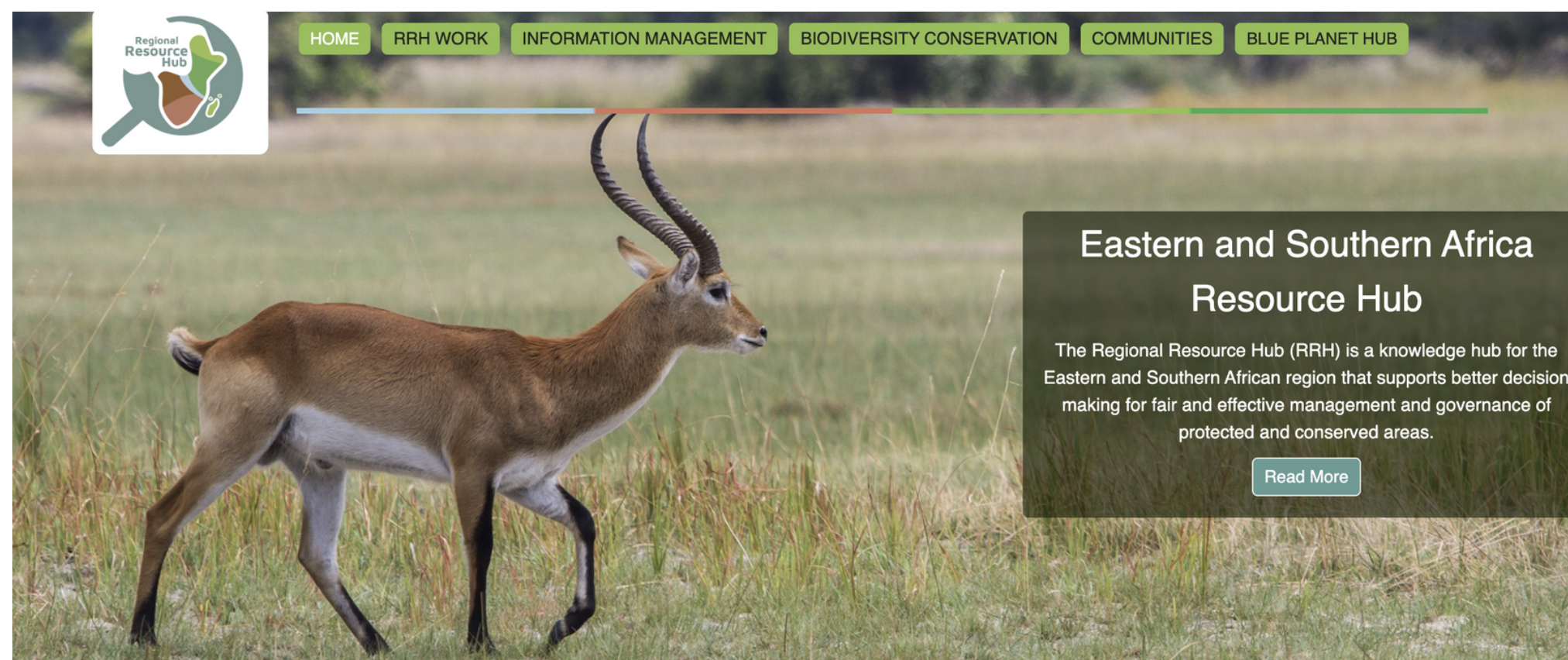






# What the RRH Offers ?

- Assessment tools for Protected Area Management Effectiveness & Protected Area, Governance and Equity
- Baseline data to inform decision making
- Knowledge Products
- Capacity building
- Regional Reference Information System
- Policy and Legislation



## Regional Resource Hub Host



## With support of

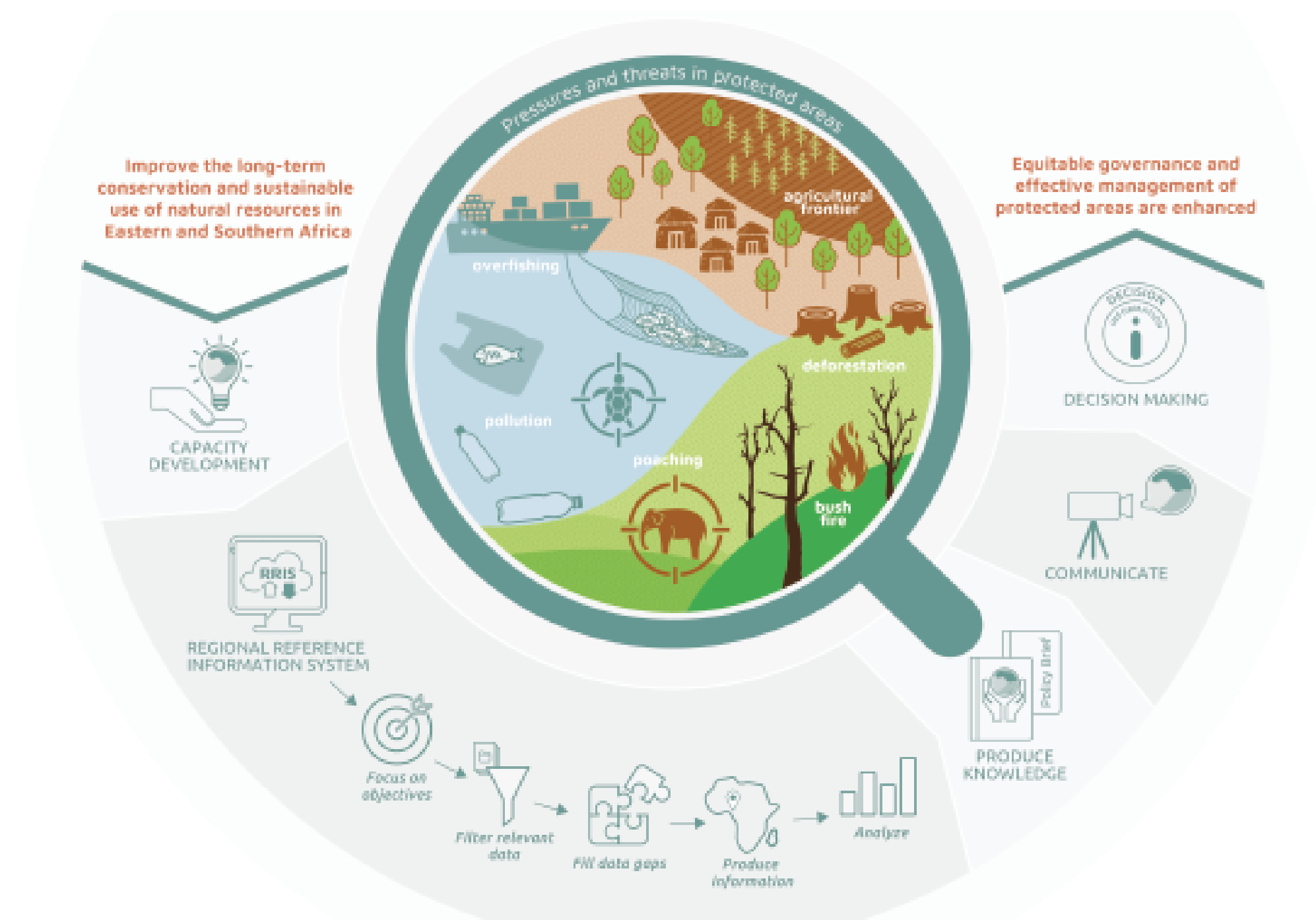


## Donors & Implementing partners





# In summary



Regional Resource Hub Host



With support of



Donors & Implementing partners

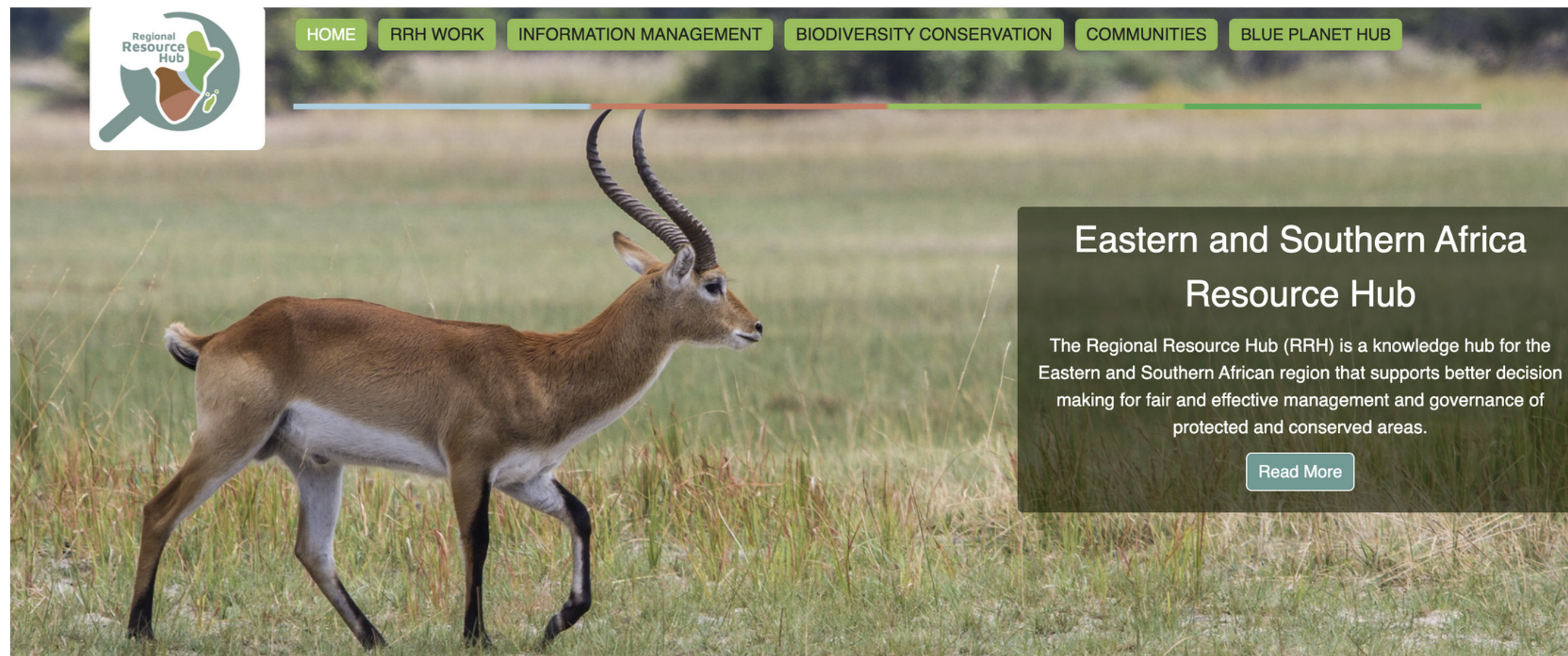






# ESA Hub Portal (demo)

[HTTPS://ESAHUB.RCMRD.ORG](https://esahub.rcmr.org)



## Regional Resource Hub Host



## With support of



## Donors & Implementing partners







# LAUNCH OF THE REGIONAL RESOURCE HUB FOR EASTERN AND SOUTHERN AFRICA

TUESDAY 24.11.2020

## INTEGRATED MANAGEMENT EFFECTIVENESS TOOL



**Domoina Rakotobe**  
Senior IMET coach  
Madagascar

# IMET

Regional Resource Hub Host



With support of



Donors & Implementing partners



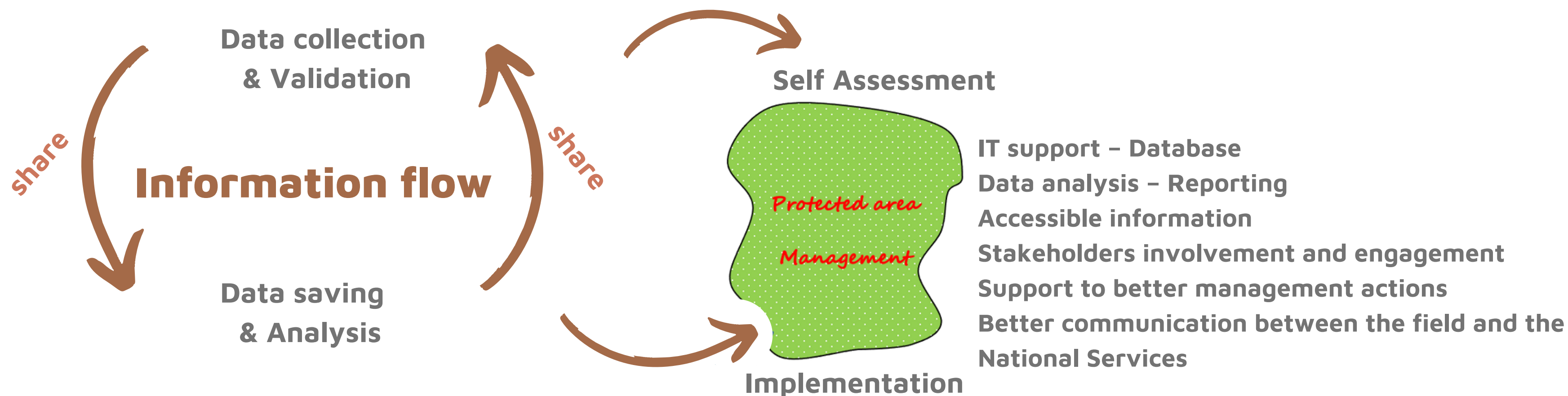


# INTEGRATED MANAGEMENT EFFECTIVENESS TOOL

## IMET

### HOW IMET WORKS

#### EVALUATION- ANALYSIS - ACTION



Regional Resource Hub Host



With support of



Donors & Implementing partners







# INTEGRATED MANAGEMENT EFFECTIVENESS TOOL

## IMET

### IMET: A TOOL TO SUPPORT PROTECTED AREAS IN THE FIELD

IMET is NOT a new tool: it combines different tools and integrates nearly all the indicators of METT, Global Study, EoH and RAPPAM

- **QUANTITATIVE**
- **COMPARABLE**
- **RELIES ON A DATABASE**

1. **Assessment of the PA:** Context of Intervention
2. **Assessment of PA:** Management Effectiveness
3. **Visualization of results:** Decision Support System
4. **Reporting of results:** Formulation of operational recommendations

Regional Resource Hub Host



With support of



Donors & Implementing partners





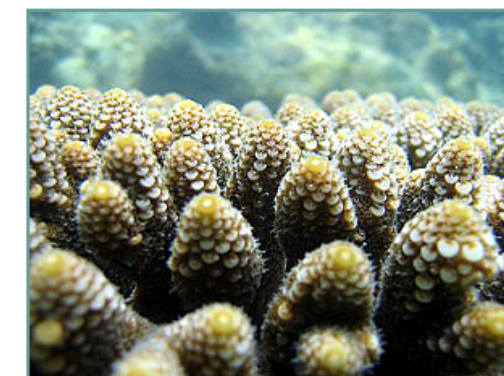
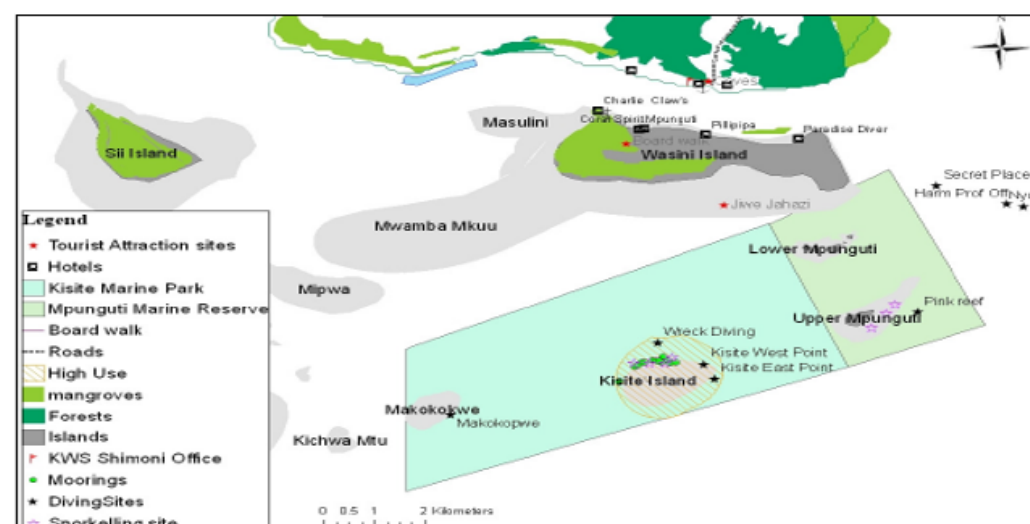


# IMET ASSESSMENT: KISITE AND MPUNGUTI NATIONAL PARK

## APRIL 2019



**Paul Wambi**  
Park Warden  
Kisite and Mpunguti National Park  
Kenya



Regional Resource Hub Host



With support of



Donors & Implementing partners







# IMET ASSESSMENT: KISITE AND MPUNGUTI NATIONAL PARK

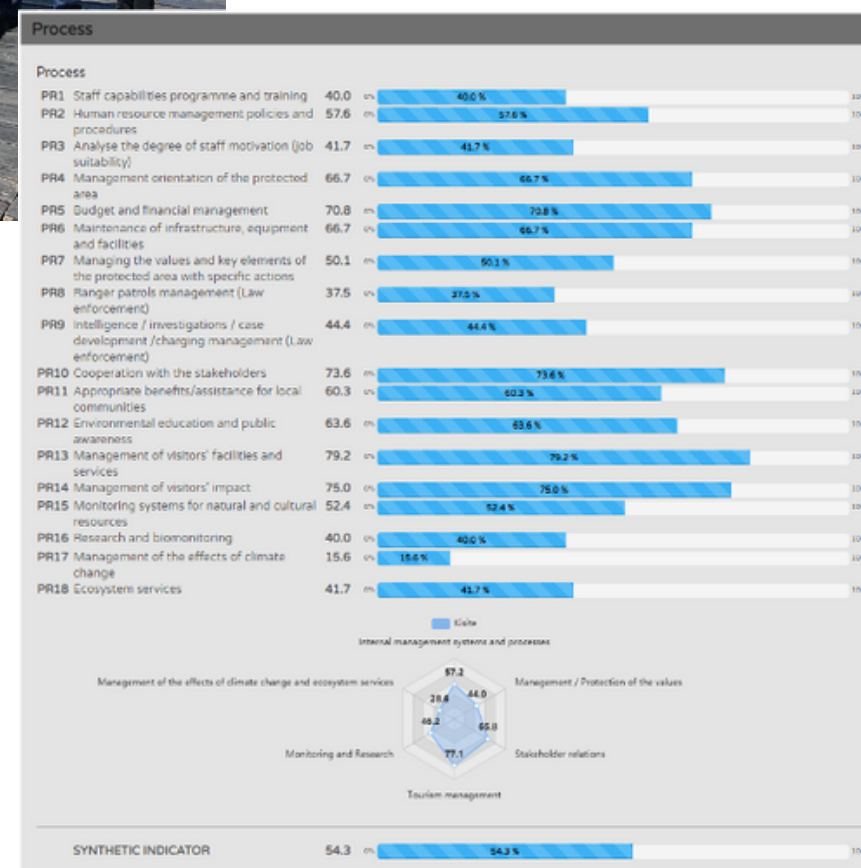
APRIL 2019



## Integrated Management Effectiveness Tool (IMET)

### Analysis report

#18 Kisite Kenya



## CONTEXT OF INTERVENTION

1. General information about the protected area
2. Land areas, boundaries, shape index and level of control of the protected area
3. Human, financial and material resources of the protected area
4. Key factors (terrestrial and marine protected areas): i) flagship, endangered, endemic, invasive, exploited, with insufficient data; ii) habitats; iii) land-cover-change and iv) management of natural resources
5. Pressures on and threats to the protected area
6. Climate change and conservation
7. Ecosystem services and dependence of communities in the protected area on these services

## MANAGEMENT EFFECTIVENESS

1. Context
2. Planning
3. Inputs
4. Process
5. Outputs
6. Outcomes

## QUALITY OF GOVERNANCE (working in progress)

Regional Resource Hub Host



With support of



Donors & Implementing partners







# IMET ASSESSMENT: KISITE AND MPUNGUTINATIONAL PARK

- IMET showed that the MPA has well defined conservation values, but that park management faces difficulties related to threats and needs for external support.
- IMET identified concerns on the **inputs** as human resources, equipment and facilities are not sufficient.
- The park management could also improve the local communities' involvement and better understand how to mitigate the human-wildlife conflicts.

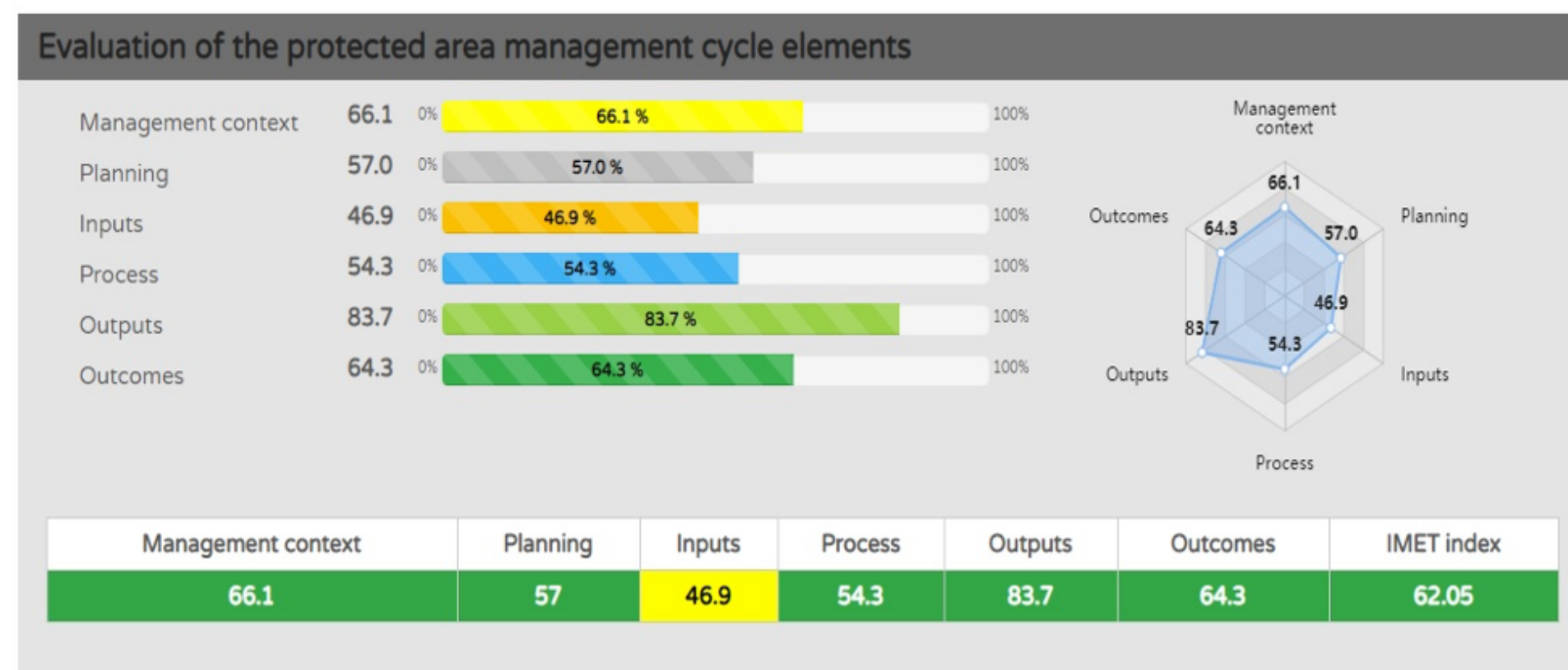
last update by: Paolini Carlo 2020-09-24 14:23:46

Conservation conditions and trends for key animal species

Key conservation element	Condition of the key element	Trend of the key element	Reliability of information	Comments/Explanation
Tursiops aduncus	N/A -3 -2 -1 0 1 2 3	N/A -3 -2 -1 0 1 2 3	Poor ✖	no data
Eretmochelys imbricata	N/A -3 -2 -1 0 1 2 3	N/A -3 -2 -1 0 1 2 3	Poor ✖	no data
Dugong dugon	N/A -3 -2 -1 0 1 2 3	N/A -3 -2 -1 0 1 2 3	Medium ✖	
Chelonia mydas	N/A -3 -2 -1 0 1 2 3	N/A -3 -2 -1 0 1 2 3	Poor ✖	no data
Onychoprion fuscatus	N/A -3 -2 -1 0 1 2 3	N/A -3 -2 -1 0 1 2 3	Poor ✖	no data
Megaptera novaeangliae (Humpback whale)	N/A -3 -2 -1 0 1 2 3	N/A -3 -2 -1 0 1 2 3	Medium ✖	
Balistapus undulatus (Orange striped triggerfish)	N/A -3 -2 -1 0 1 2 3	N/A -3 -2 -1 0 1 2 3	Medium ✖	

Conservation conditions and trends for key plant species

Key conservation element	Condition of the key element	Trend of the key element	Reliability of information	Comments/Explanation
Mangroves	N/A -3 -2 -1 0 1 2 3	N/A -3 -2 -1 0 1 2 3	Medium ✖	
Thalassia sp	N/A -3 -2 -1 0 1 2 3	N/A -3 -2 -1 0 1 2 3	High ✖	



The IMET assessment has highlighted how the MPA ensures the dual roles in protecting biodiversity and in promoting tourism activities, which are important for the local communities.

Regional Resource Hub Host



With support of



Donors & Implementing partners





# LAUNCH OF THE REGIONAL RESOURCE HUB FOR EASTERN AND SOUTHERN AFRICA

TUESDAY 24.11.2020

## STATE OF PROTECTED AND CONSERVED AREAS IN EASTERN AND SOUTHERN AFRICA

*An overview*

**LEO NISKANEN**

Regional Technical Coordinator  
Conservation Areas and Species  
Programme  
IUCN Eastern and Southern Africa  
Regional Office



Regional Resource Hub Host



With support of



Donors & Implementing partners





# STATE OF PROTECTED AND CONSERVED AREAS IN EASTERN AND SOUTHERN AFRICA

## Aims and objectives

Provide an overview of the status of protected and conserved areas in Eastern and Southern Africa

- Assess region's progress towards relevant regional and global targets
- Highlight successes and key challenges for protected and conserved areas
- Promote the learning of lessons between the countries of Eastern and Southern Africa
- Provide key recommendations for policy and practice



Regional Resource Hub Host



With support of



Donors & Implementing partners







# STATE OF PROTECTED AND CONSERVED AREAS IN EASTERN AND SOUTHERN AFRICA

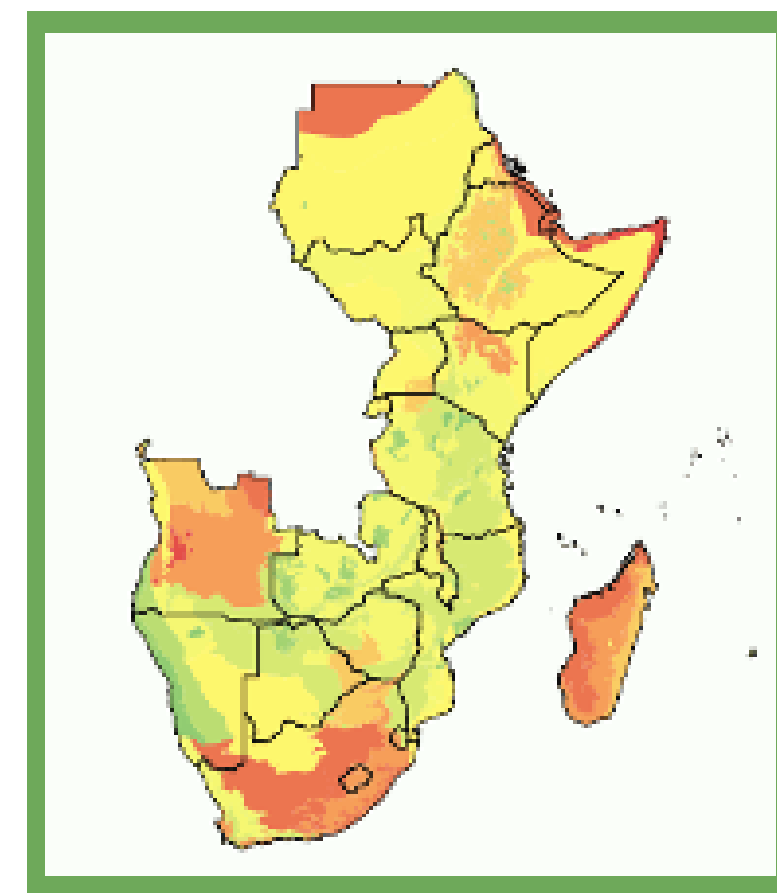
## Structure and content of the report

Part I - conceptual and international framework

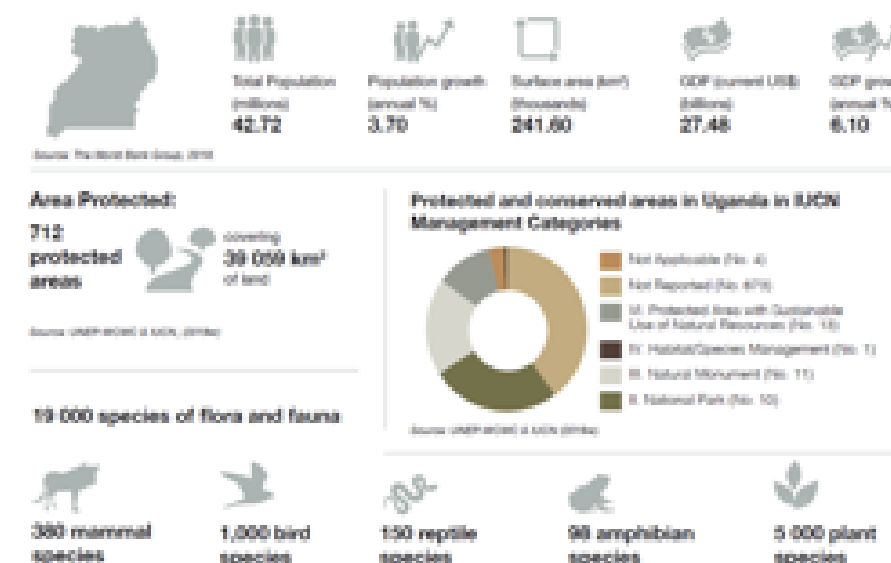
Part II - regional context and data & country profiles

Part III - governance and management effectiveness

Part IV - recommendations for policy and practice based  
on the findings in the report



Ecoregion coverage in ESA by  
protection percentage



Country profile

Regional Resource Hub Host



With support of



Donors & Implementing partners

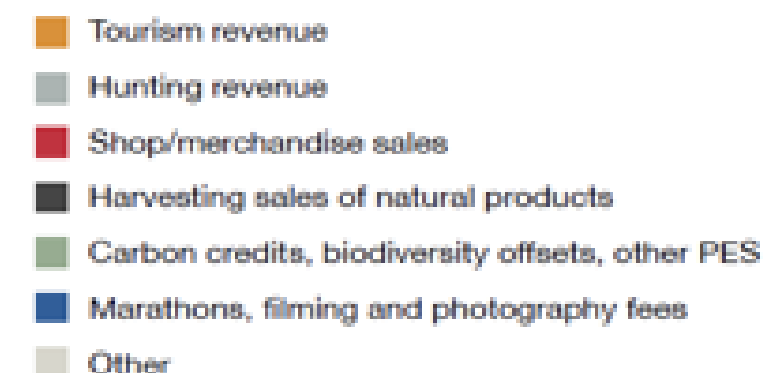
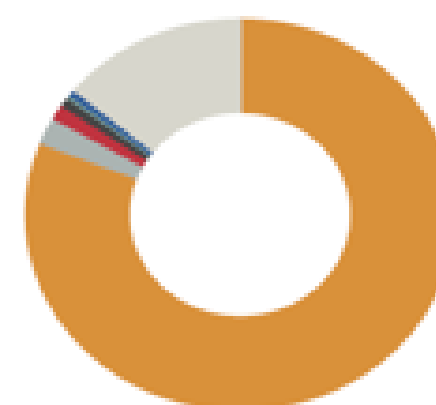




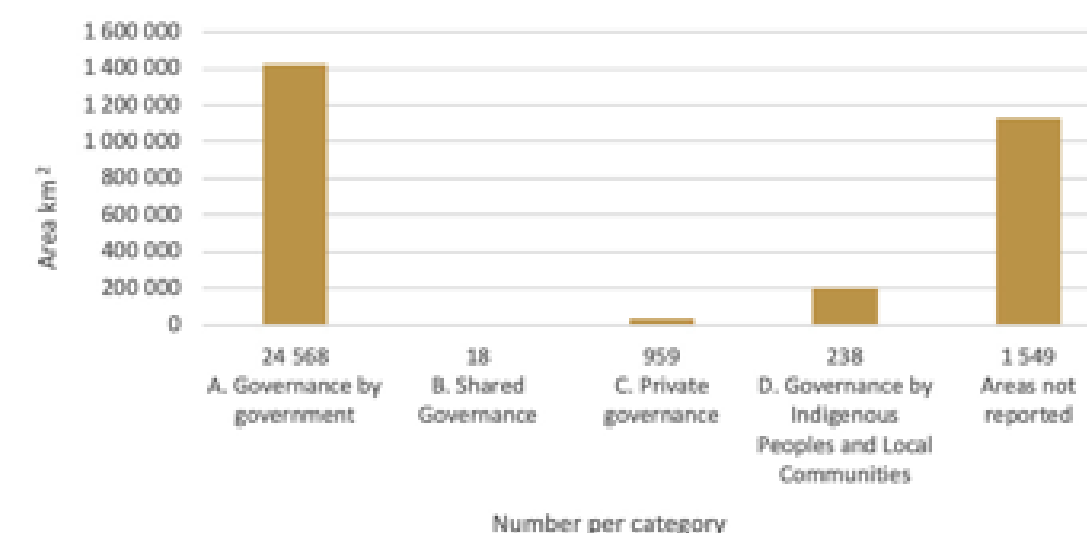
# STATE OF PROTECTED AND CONSERVED AREAS IN EASTERN AND SOUTHERN AFRICA

## Main findings and recommendations

- Increase sustainable financing and political support for protected and conserved areas
- Diversify governance and recognize effective local, community and co-management & OECMS
- Enhance collaboration across borders and sectors to respond to existing and emerging threats



Breakdown of internally generated revenue in 7 countries: Eswatini, Ethiopia, Kenya, Namibia, South Africa, Tanzania and Uganda



Regional Resource Hub Host



With support of



Donors & Implementing partners



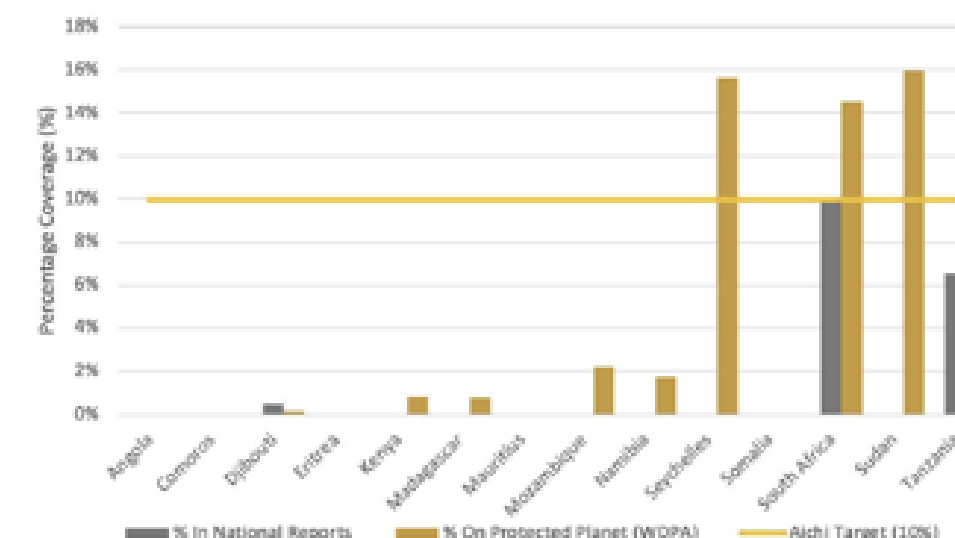


# STATE OF PROTECTED AND CONSERVED AREAS IN EASTERN AND SOUTHERN AFRICA

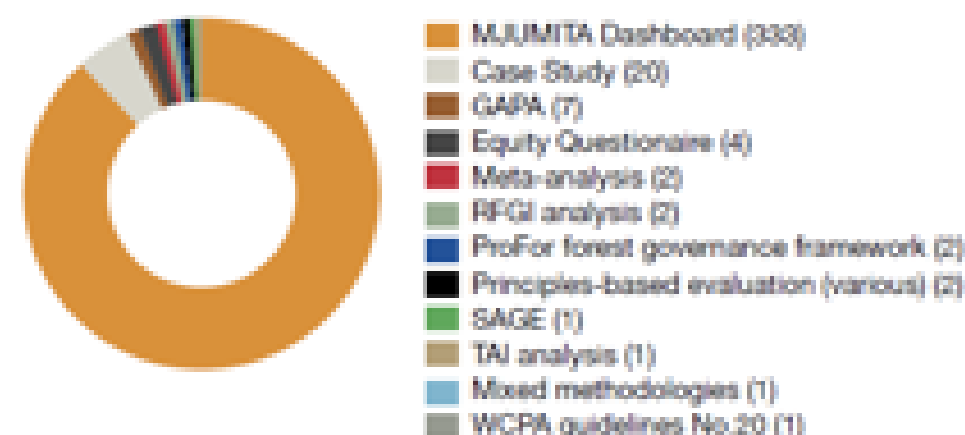
## Main findings and recommendations

- Address gaps in the coverage of marine and terrestrial ecosystems
- Improve coverage of assessments of management effectiveness, governance and equity
- Enhance capacities for protected and conserved area management

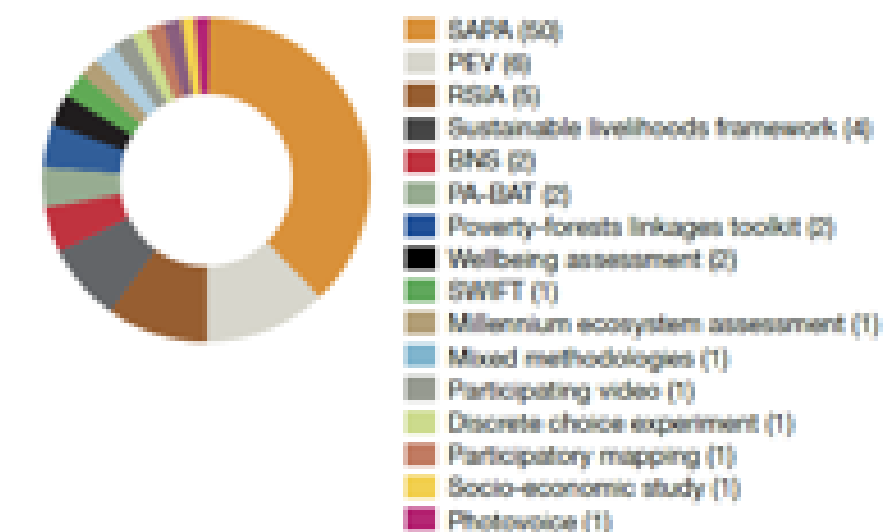
Coastal and marine protected area coverage



Governance assessments



Social assessments



Regional Resource Hub Host



With support of



Donors & Implementing partners



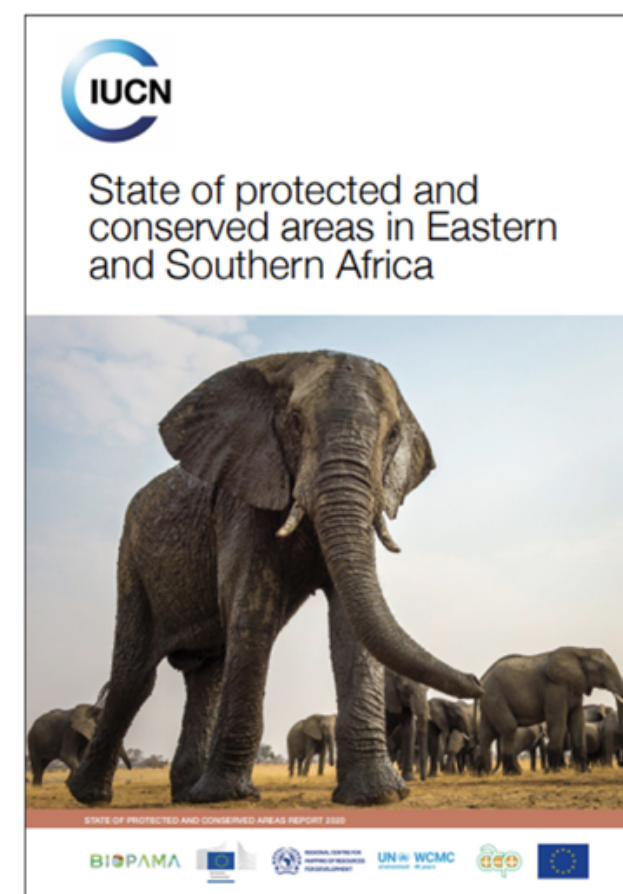




# STATE OF PROTECTED AND CONSERVED AREAS IN EASTERN AND SOUTHERN AFRICA

## Next steps

- Catalyse action to address identified gaps and priorities
- Roundtables with key stakeholders to follow up on main recommendations
- Next SoPACA report scheduled for 2023



Regional Resource Hub Host



With support of



Donors & Implementing partners





# LAUNCH OF THE REGIONAL RESOURCE HUB FOR EASTERN AND SOUTHERN AFRICA

## WHAT IS IN THE PIPELINE ?

TUESDAY 24.11.2020

NGUGI KIMANI

RCMRD

HOST INSTITUTION



Regional Resource Hub Host



With support of



Donors & Implementing partners





# LAUNCH OF THE REGIONAL RESOURCE HUB FOR EASTERN AND SOUTHERN AFRICA

## WHAT IS IN THE PIPELINE ?

- Continue enhancing the RRH Portal with relevant content
  - SoPACA report brief
- Integrating the Blue Plane Hub – [blueplanethub.org](http://blueplanethub.org) (Coming soon)
  - To cater for marine and coastal information
- Hosting knowledge products for partners in conservation and community related activities
  - Example Vuka Now USAID Project

Regional Resource Hub Host



With support of



Donors & Implementing partners







# LAUNCH OF THE REGIONAL RESOURCE HUB FOR EASTERN AND SOUTHERN AFRICA

## WHAT IS IN THE PIPELINE ?

- **Linkages with Eastern Africa Forest Observatory (OFESA)**
  - Most forests are designated as protected areas
- **Partnerships**
  - **Luc Hoffman Institute** - a project in response to COVID-19 that seeks to facilitate access to COVID-19 crisis funding for nature-based tourism to help mitigate these impacts
  - **Ocean InfoHub by UNESCO** - focusing on ocean related web-based resources of data
  - **Project mapping - SADC TFCA** initiative to map projects occurring in Southern Africa region

Regional Resource Hub Host



With support of



Donors & Implementing partners

